

Midsomer Norton Primary School



Head teacher: Mr Alun Randell

Dear Parents/ Carers,

I would like to say a very big well-done to all of our Year 6 children and staff involved in preparing our Year 6 children for their Key Stage 2 SATs next week. They have all been working extremely hard. We believe it is important to get the balance right between preparing the children for the assessments and ensuring that our curriculum remains broad, balanced and exciting. It is important to keep the SATs in perspective so my advice to pupils (and parents/carers) is simply to relax over the weekend, enjoy yourselves but make sure that you are well rested for Monday morning. We are already very proud of you! On Thursday, the Year 6 children will enjoy a post-SATs picnic with staff.

We would also like to recognise the hard work in other areas of the school who have been involved in assessments recently.

Schools are always busy places and next week promises to be no exception with a Year 3/4 gymnastics team competing and Year 5 participating in a cricket festival, and also taking part in workshops run by Wessex Water. Year 1&2 have an Adventure Day booked for Friday which promises to be fantastic with a wide range of activities planned. Although we are hoping to go ahead with this event, we currently have received voluntary contributions for only half of the children. Ultimately these additional curriculum experiences do depend on sufficient contributions as all schools are facing severe financial pressures. There is a risk that if schools end up heavily subsidising trips and events then these 'extras' become unsustainable. A final decision on whether to hold the Adventure Day will be made on Monday.

Amethyst Power - Keeping Focused

Our children continue to earn 'Amethysts' for keeping focused this term. Already we have collected enough amethysts for the children to have earned at least an extra playtime at the end of term. There is chance the children can earn extra Greenie Time or even a whole school picnic (to be held in Term 6)!

PSG

Our Parents' Support Group makes a real difference to our school by organising great events for children and their families and by fundraising for the benefit of all of our pupils. We have just placed an order for over £1000 of maths curriculum resources, funded by the PSG, that we simply would not have been able to purchase any other way. The current members of the PSG committee will be stepping down at the end of this year and I would like to say an enormous thank you for their efforts. If you would be interested in being a member of the committee or sharing a role on the committee, please come along to the PSG annual general meeting on 13th June, 6:00pm in the school hall.

PSG News

"Some dates for your diary:

The next Mufti Day will be Friday 25th May where we will be asking the children to bring in £1 in exchange for wearing their own clothes. This will go towards costs for the Summer Fayre.



Thursday 17th May Lunch

The menu on the above date will be Sausage and Chips followed by Ice-cream. Vegetarian sausages will be available.

Music for Schools

Lessons start back on Monday 5th June. Thank you.

Please sign up to ParentPay if you haven't already done so.

Visitor access to school

Please remember that visitors, including parents, can no longer access the school via the lower entrance. All visitors are asked to enter via the main entrance and sign in at Reception. Thank you for supporting us in keeping the school site secure.

Drop off and read times for Term 5

Reception - Weds 8.45am
Years 1/2 - Tues 8.45am
Years 3/4 - Thurs 8.45am
Years 5/6 - Weds 8.45

Pick Up and read times for Term 5

Reception - Thurs 2.55pm

Try tennis for free - Camvale Tennis Club, Sunday 13th May. To book and find out more, go to www.lta.org.uk/gbtw Flyers in reception

Spotters Hockey May Half Term

2018 Camp will be running 9am -2pm on 30th and 31st May 2018 at Beechen Cliff School for hockey players ages between the ages of 7 and 15 years old For more details or to book your child's place please email spottershockey@yahoo.co.uk

PSG AGM - Wednesday 13th June, 6pm - please come along to support the work of the PSG next year.

Summer Fayre - Saturday 7th July in the afternoon/evening. If you would like a stall please contact the PSG on Facebook or by leaving a note at the office. Stalls are £10. A letter was sent home last week asking for offers of help - we'd love to hear from you :-)"

Parking on the zigzag lines

I have been contacted today by BANES regarding drivers parking on the zigzag lines near school. A parking control officer will be passing by periodically. Please remember that parking on the zigzags automatically results in points on a license, but more importantly places our children at risk.

Parent Survey

Thank you very much to all who provided feedback via the Parents Survey. The results are now being analysed and we will be publishing outcomes and how the feedback will shape our school development plans soon.

Have a lovely weekend.

Alun Randell
Head teacher



News



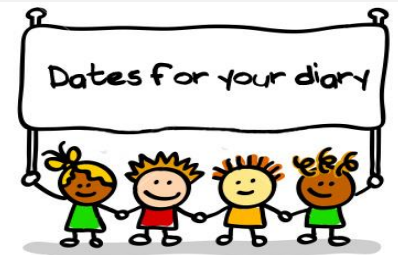
Don't forget that you can catch up with what's going on in school on our twitter feed:

<https://twitter.com/MSNPrimary>

Letters home this week:

PSG Summer Fayre

All letters are uploaded to the school website



Swimming Uranus Class -

Swimming Tuesday

Neptune Swimming 16th May

Year 5/6 Orienteering-Weds 23rd May

KS1 Adventure Day-Fri 18th May



Head Teacher Awards

Riley Olivia Harvey Pippa
Sophie Millie Isabel Esme
Archie Georgina Lucas Zuzanna
Jecaela



Gold Awards

For demonstrating exemplary behaviour...

Aston Ralphie Isaac Charlotte
Charlie Alesha Macy Ashlee
Elwood Lewis JC Isabella



Birthdays

Oliver Erica Ieuan Keira

Attendance Champions of the week

Joint 1 st	Neptune/Mercury	99.3%
2 nd	Moon	96.5%